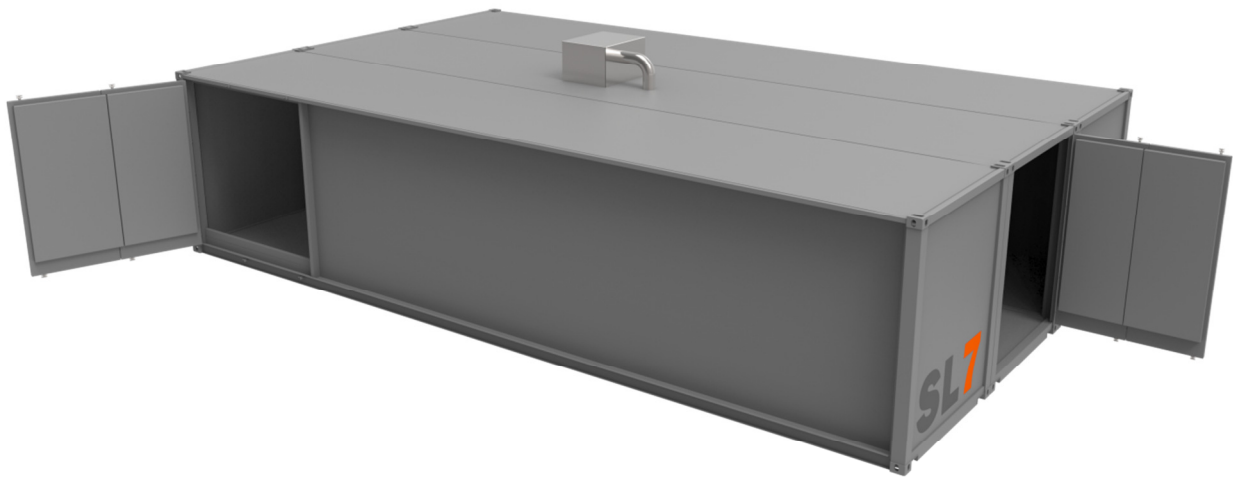


**SL7-Innovations Ltd**

Relocatable, Zero Separation & 4hr Fire Protection

# SL7™ - DG WORKROOM

240/240/240 FRR Relocatable Mixing Room



# SL7™ - PRODUCT/TECHNICAL BULLETIN



*“Relocatable, Zero Separation & 4hr Fire Protection”*



# DG WORKROOM

## Product/Technical Data Sheet



### Product Description:

The DG WorkRoom is a WorkSafe, 'Type 2 & 3' approved work room or mixing room meeting the requirements of 240/240/240 FRR and used primarily for the blending of hazardous substances in confined spaces where zero separation, relocatability and being certified compliance ready to site are major benefits.

### Customer Benefits:

- SL7** 240/240/240 FRR compliant
- SL7** Ensures maximum hazsubs thresholds under the regulations can be maintained
- SL7** Ideal solution where a new operation conflicts with 'existing use' provisions
- SL7** Design build so client can get what they want – some parameters apply
- SL7** Can be supplied 'optioned' with, but not limited too;
  - ✚ - /240/ - FRR fire dampers,
  - ✚ certified - /240/ - penetrations for power and feedlines
  - ✚ electrical lighting, wiring and explosive atmosphere requirements to AS/NZS2381
  - ✚ Extraction and/or HVAC ventilation to AS1482
- SL7** Zero separation to buildings and boundaries
- SL7** Ideal solution where building to boundary separation is an issue
- SL7** Internally bundled
- SL7** Arrives to site 'business ready', certified compliant for use
- SL7** Modular design so can be disassembled and relocated to a new site
- SL7** Saleable asset, not a 'sunk' capex cost – 'if it's surplus to requirements, sell it'
- SL7** Removes or reduces building related compliance issues and associated costs to BWOFF
- SL7** Can be used inside or outside a building – regulatory conditions apply\*
- SL7** 237% lighter per m2 to equivalent 190mm tilt slab concrete panel equivalent
- SL7** Between 30%-40% cheaper than equivalent sized concrete structure – based on customer comments.
- SL7** Door numbers and locations are part of the design phase with client
- SL7** DG WorkRoom is approved for local transportation and international shipping

### Modular WorkRoom Dimensions:

These are an example of the dimensions we can achieve with **SL7** DG Work Rooms;

Lengths	Overall Widths				
	2.5 Mtrs	5 Mtrs	7.5 Mtrs	10 Mtrs	12.5 Mtrs
6 Mtrs	15m2	30m2	45m2	60m2	75m2
12 Mtrs	30m2	60m2	90m2	120m2	150m2
18 Mtrs	45m2	90m2	135m2	180m2	225m2
24 Mtrs	60m2	120m2	180m2	240m2	300m2
30 Mtrs	75m2	150m2	225m2	300m2	375m2
36 Mtrs	90m2	180m2	270m2	360m2	450m2

**Note: All dimensions are external sizes only**

***"Relocatable, Zero Separation & 4hr Fire Protection"***



**Testing Approvals:**

This product has been independently tested and approved to AS1530.4 under the building code and the requirements of 240/240/240 FRR. It also meets the requirements of UL1709 and its requisite 4 hour jet pool fire test as well as AS/NZS4114 as a paint mixing facility.

<b>Technical Data &amp; Properties</b>	
Colour – outside	Black
Colour – inside	Light grey
Paint	Two pack epoxy
Internal bund capacity	Variable with combination of length & width
Floor material	Fibreglass/Plastic grated or steel
External length	6 metre and 12 metre and combinations of both
External width	2.5 metres and multiples from there
External height	2896mm
Internal length	Variable with combination of length & width
Internal width	Based on final length & width combination
Internal height – floor to upper door access	Based on final length & width combination
Internal height – floor to ceiling	2374mm
Doors	Variable based on client requirement
Approximate weight - 6 metre +/-11,000kg	Single unit x the combinations
Approximate weight - 12 metre +/-22,000kg	Single unit x the combinations
Shipping/Transportation	ISO frame approved for international distribution
Insulation factor	120 degrees Celsius

**Test Summary Report**

SL7 products have been independently tested to, and exceed the requirements for 240/240/240 FRR against AS1530.4 as specified. Clicking the following .pdf for your copy of the test summary report;



SL7 Test Report Summary.pdf

**Compliance:**

SL7 products are issued with a compliance plate affixed to the front/side giving details required by a registered test certifier to show that it meets all of the requirements of the regulations.

**Installation Requirements:**

The vault needs to be placed on a concrete pad that is level ideally or at a minimum on a prepared level ground surface of compacted aggregates with the final preparation being an AP20 aggregate or similar.

SL7 issues a PS1 & PS4 certifying compliance to AS1530.4.

**“Relocatable, Zero Separation & 4hr Fire Protection”**



## DG WORKROOM

Product/Technical Data Sheet

### ***Safety Instructions:***

The doors should be secured at all times whether closed or opened to avoid any movement which could result in unintended harm.

### ***Dimensional Specifications:***

These dimensional specifications can vary slightly from actual based on manufacturing tolerance;

### ***SL7 – New Zealand & Australia Enquiries:***

SL7 Innovations Limited  
66-68 Carmen Road, Hornby, Christchurch, New Zealand  
Mobiles: +64 27 460 9254 or +64 27 460 9258  
Emails: [paul@SL7.co.nz](mailto:paul@SL7.co.nz) or [lionel@SL7.co.nz](mailto:lionel@SL7.co.nz)  
Website: [www.SL7.co.nz](http://www.SL7.co.nz)

***“Relocatable, Zero Separation & 4hr Fire Protection”***